

# RSoft Photonic Device 2021.09

## Installation Guide (Windows)



# 목 차

## 1. Nodelocked License Type

- 단일 PC 사용

## 2. Network (Server Installation) License Type

- 여러 대의 컴퓨터 사용을 위한 Server PC

## 3. Network (Client Installation) License Type

- 여러 대의 컴퓨터 사용을 위한 Client PC

## 4. Configure Licensing

- 라이선스 파일 재적용 또는 SCL(Synopsys Common Licensing) 재설치

# Nodelocked License Setup



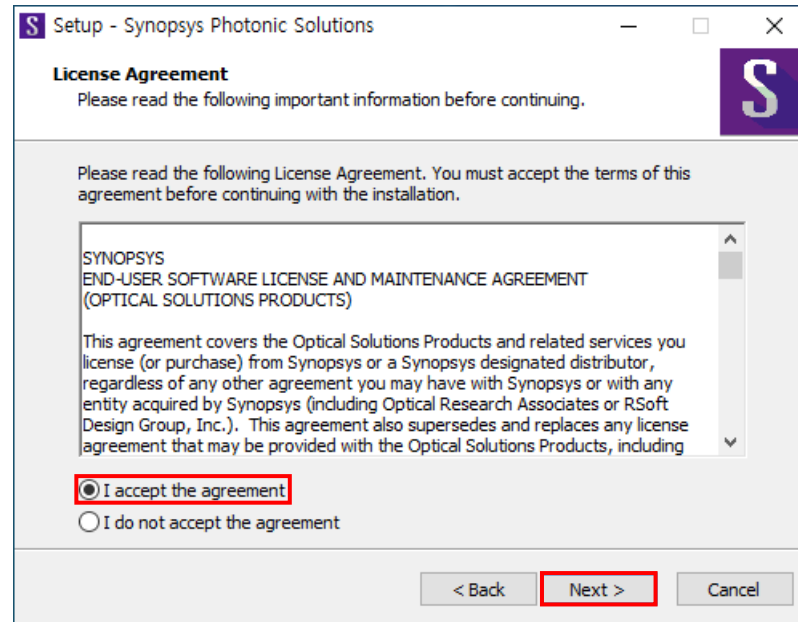
# Nodelocked License Setup

## 1. 설치 파일 실행



- RSoft 설치파일 실행
- Next 클릭

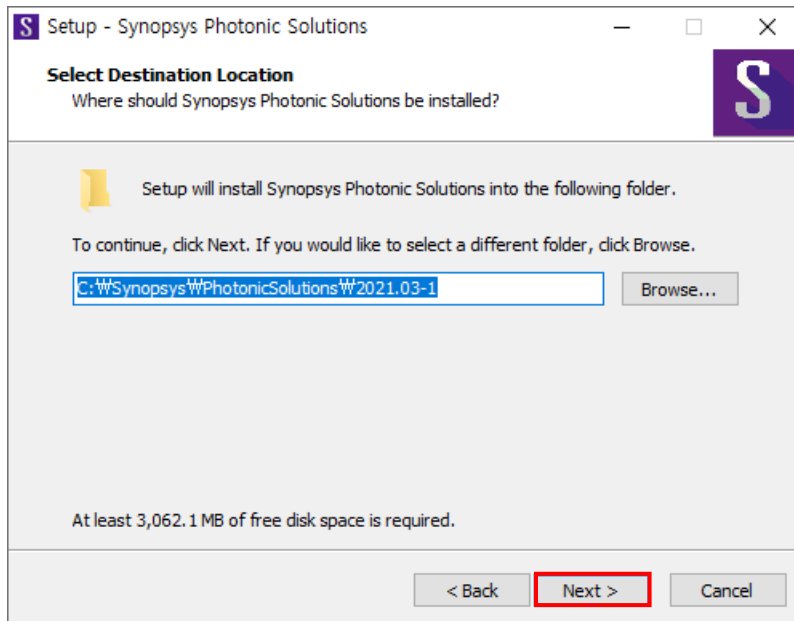
## 2. License Agreement



- I accept the agreement 선택
- Next 클릭

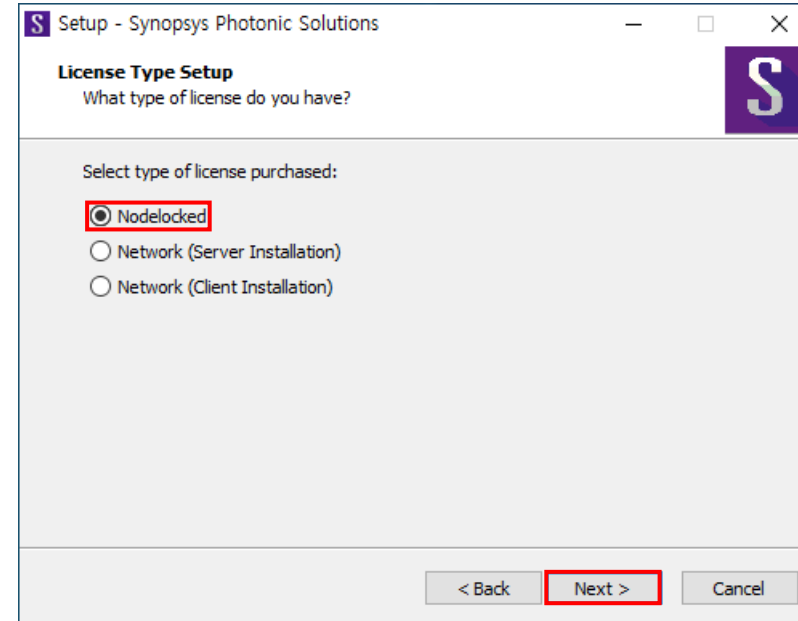
# Nodelocked License Setup

## 3. Select Destination Location



- 설치 위치 지정 (자동 입력)
- Next 클릭

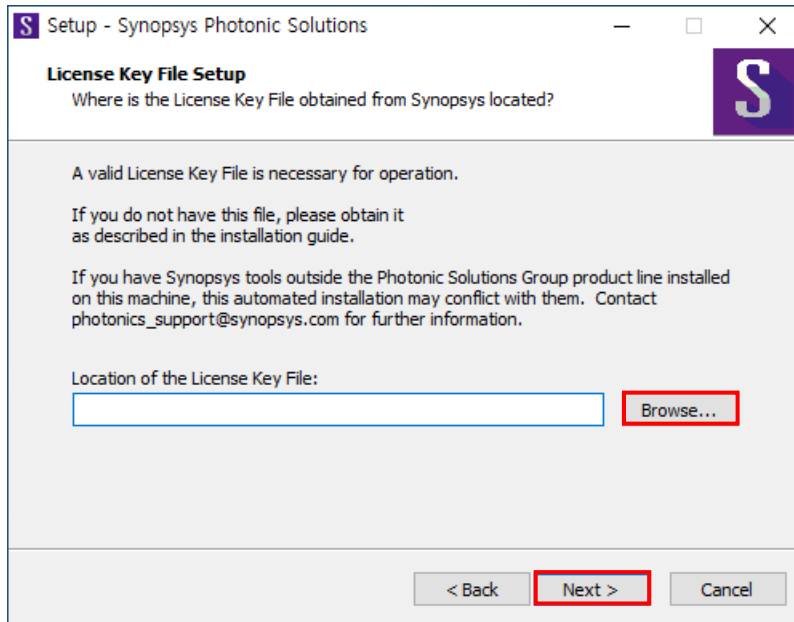
## 4. License Type Setup



- Nodelocked 선택
- Next 클릭

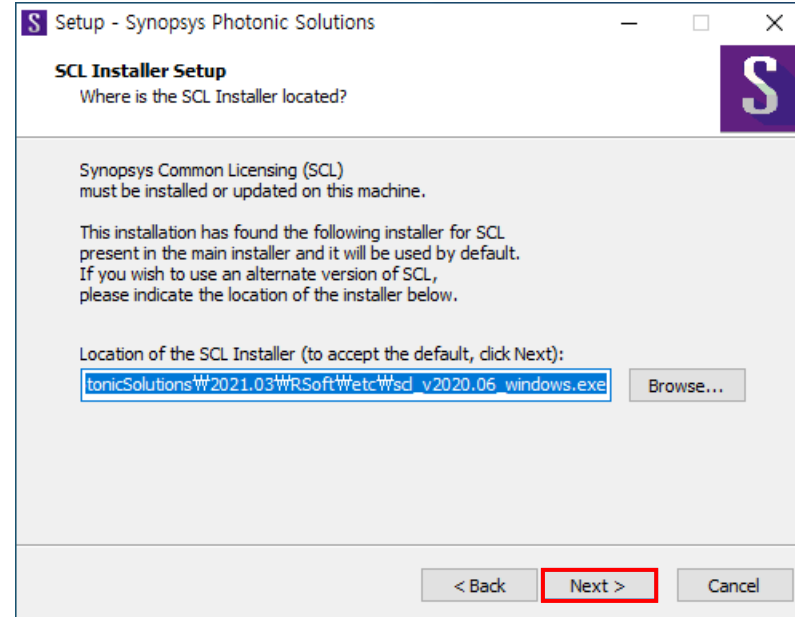
# Nodelocked License Setup

## 5. License Key File Setup



- 라이선스 파일 가져오기
- Next 클릭

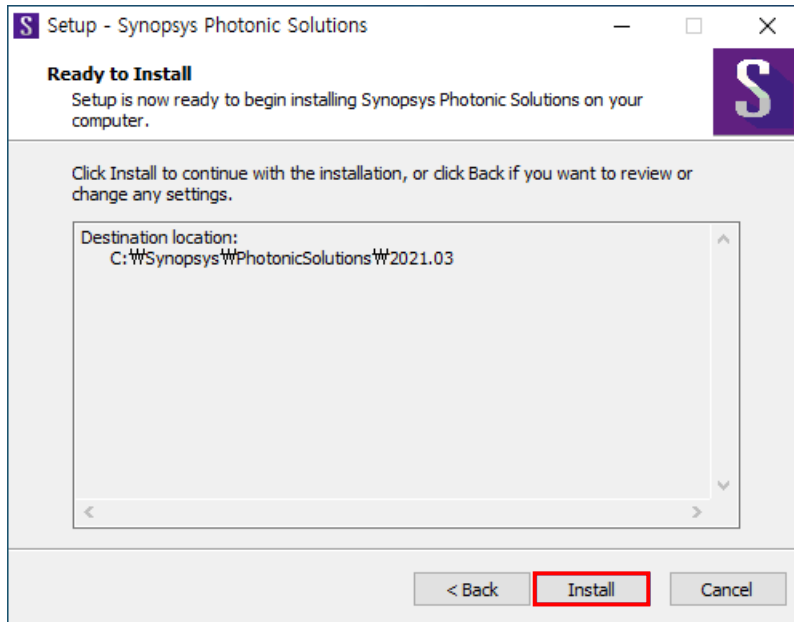
## 6. SCL Installer Setup



- SCL 설치파일 가져오기 (자동 입력)
- Next 클릭
- 기존에 RSoft를 설치한 적이 있다면(SCL이 설치되어 있다면) 빈 칸 그대로 Next 클릭

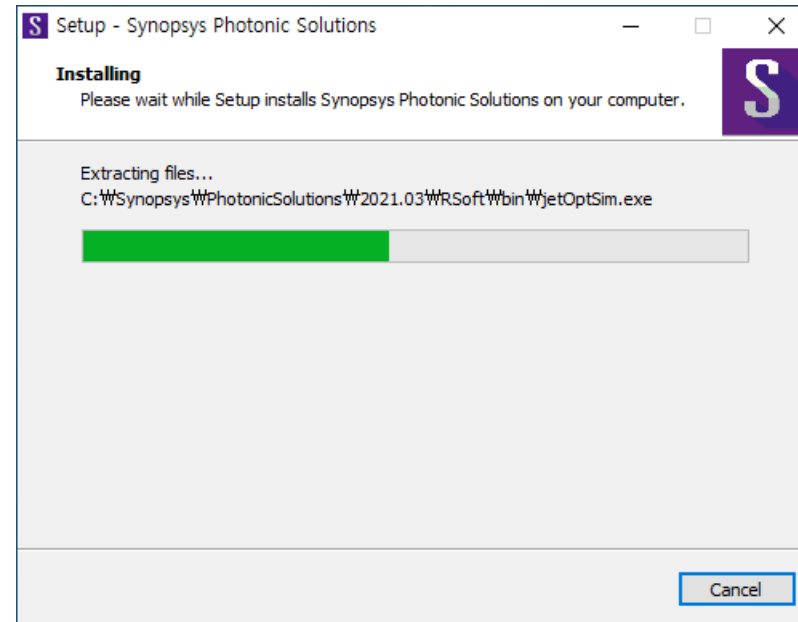
# Nodelocked License Setup

## 7. Ready to Install



- Install 클릭

## 8. RSoft Installing

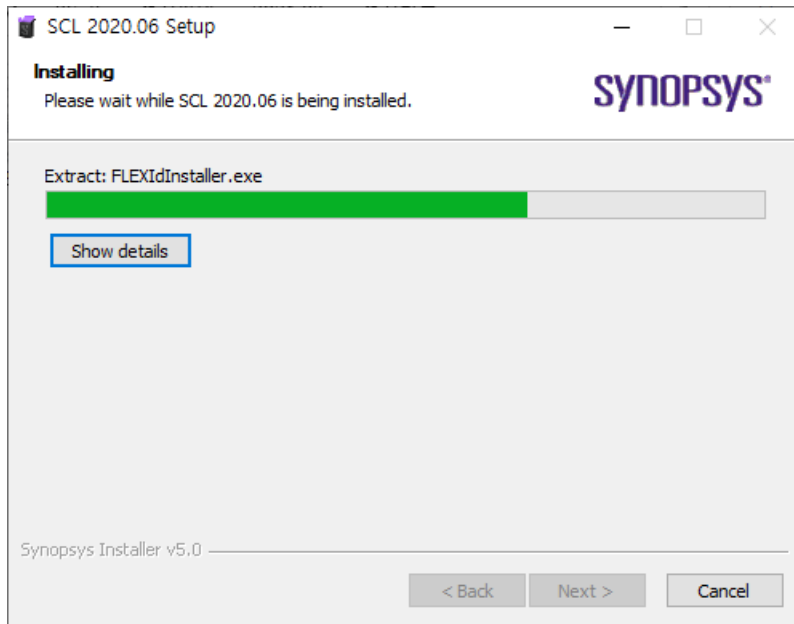


- RSoft 설치 중

# Nodelocked License Setup

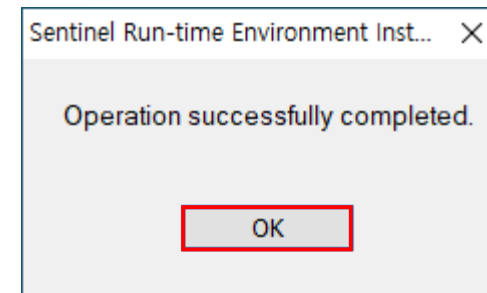
---

## 9. SCL Installing



- SCL 설치 중

## 10. Dongle Install

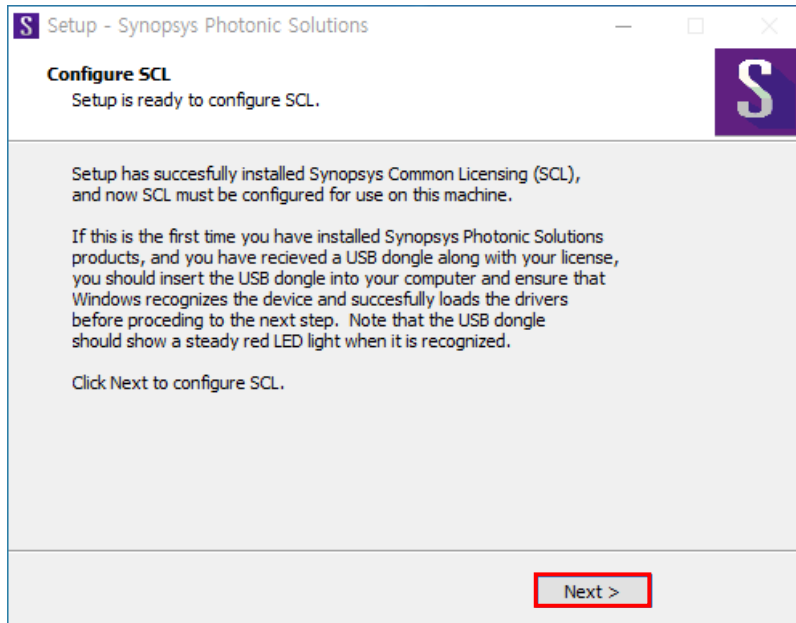


- USB Dongle 드라이버 설치 완료
- OK 클릭



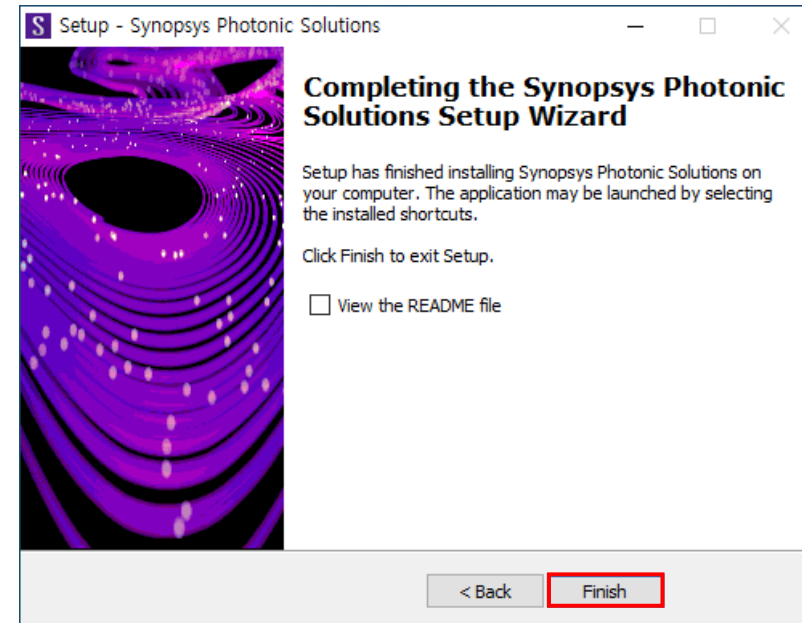
# Nodelocked License Setup

## 11. Configure SCL



- SCL 구성
- Dongle에 빨간 불이 들어와 있는지 확인
- Next 클릭

## 12. 설치 완료



- Finish 클릭

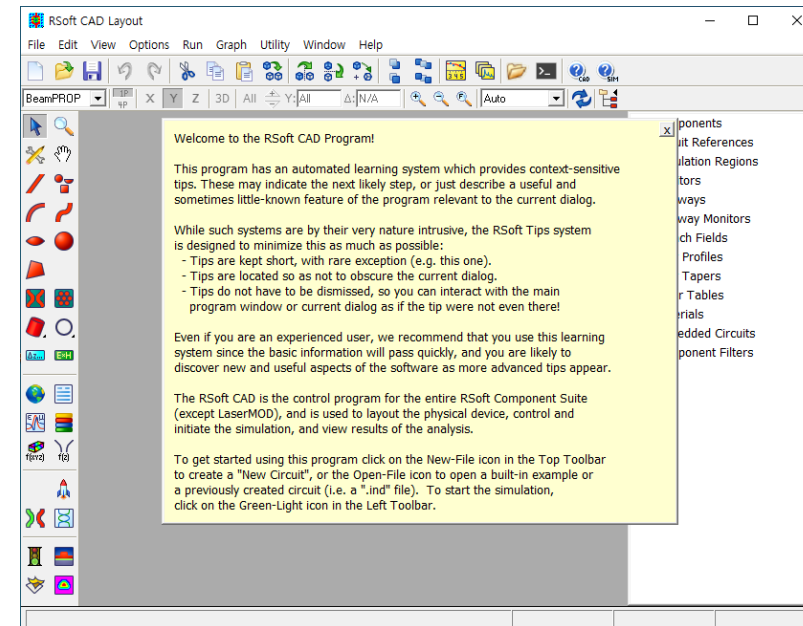
# Nodelocked License Setup

## 13. RSoft Device 실행



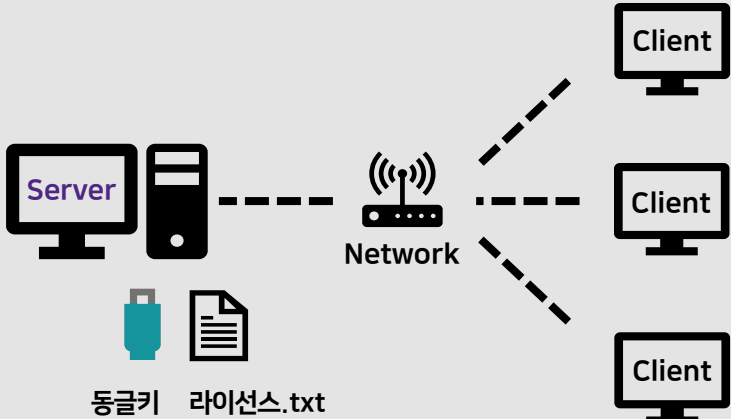
- RSoft CAD-Layout 2021.09 클릭
- 2021.03 버전부터 RSoft Device/System, OptoDesigner가 통합되어 설치

## 14. 실행 완료



- 실행 완료

# Network (Server Installation) License Setup



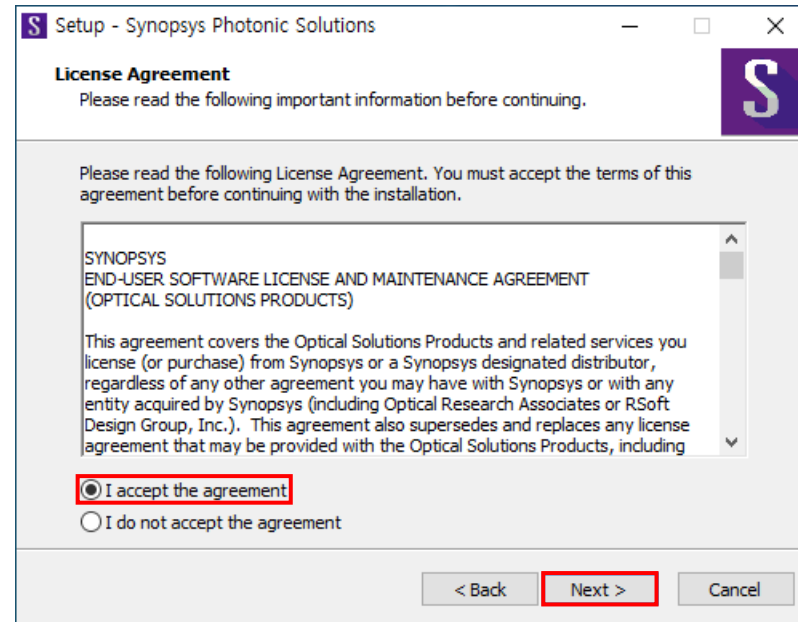
# Network (Server Installation) License Setup

## 1. 설치 파일 실행



- RSoft 설치파일 실행
- Next 클릭

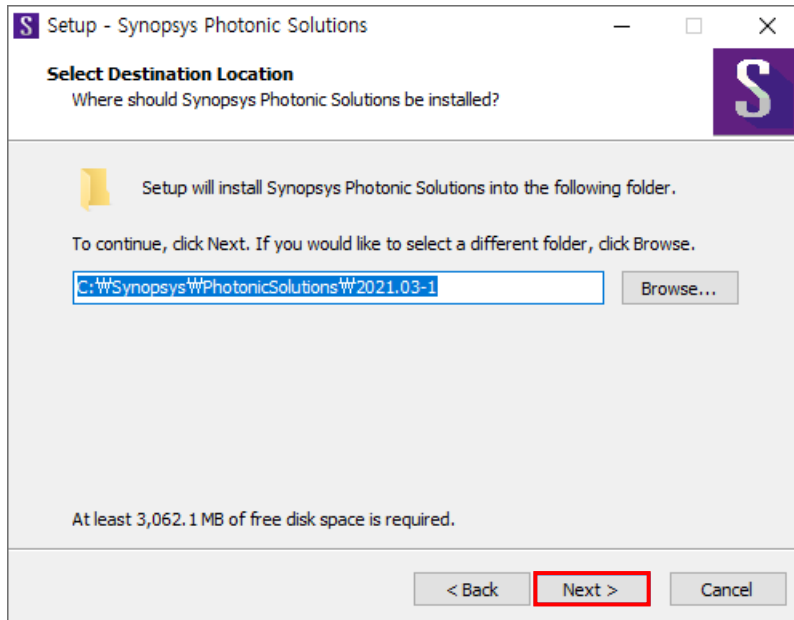
## 2. License Agreement



- I accept the agreement 선택
- Next 클릭

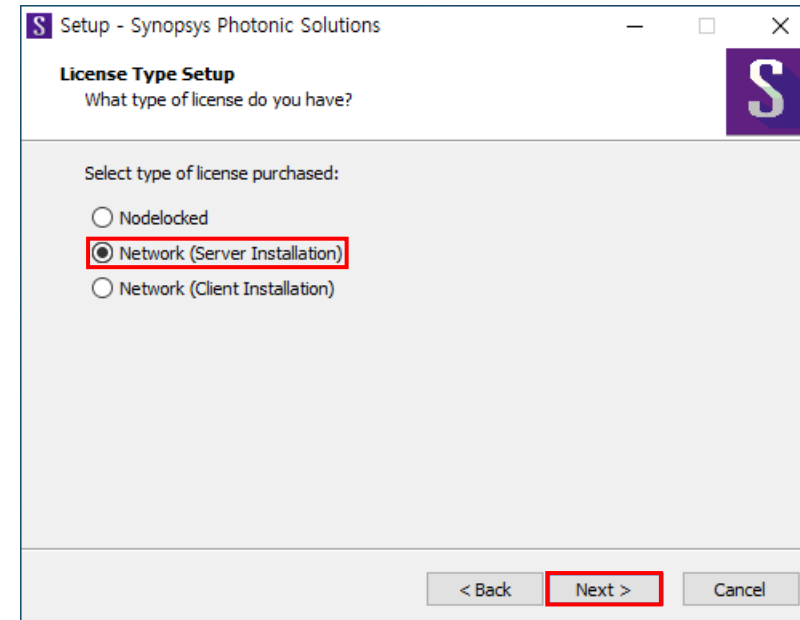
# Network (Server Installation) License Setup

## 3. License Type Setup



- 설치 위치 지정 (자동 입력)
- Next 클릭

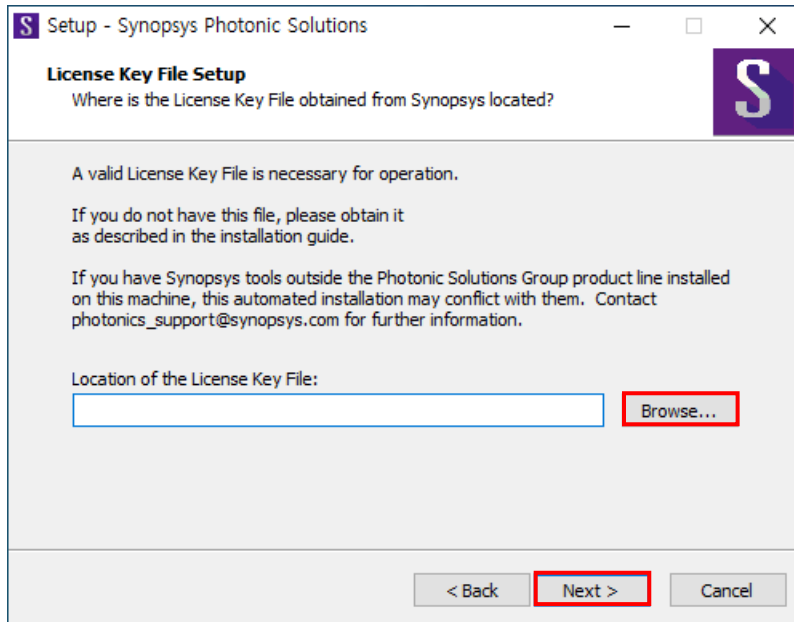
## 4. Select Destination Location



- Network (Server Installation) 선택
- Next 클릭

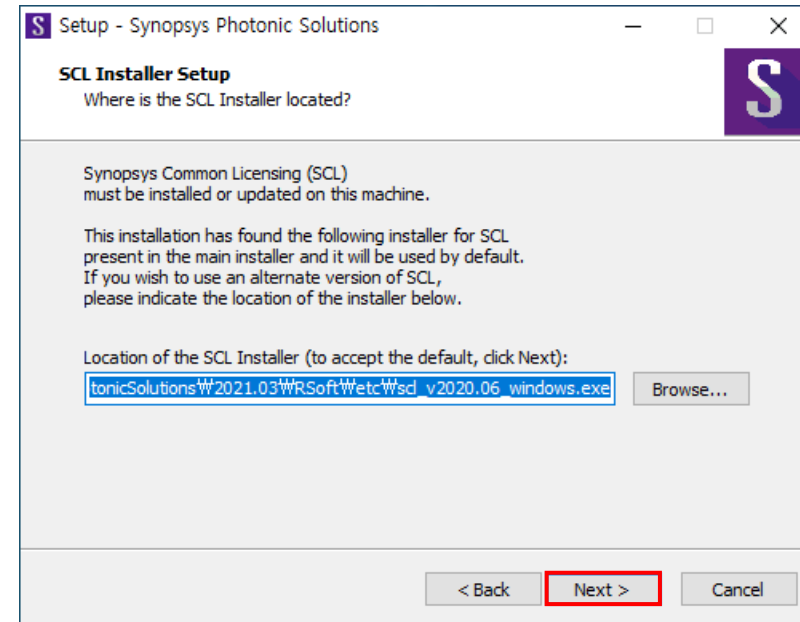
# Network (Server Installation) License Setup

## 5. License Key File Setup



- 라이선스 파일 가져오기
- Next 클릭

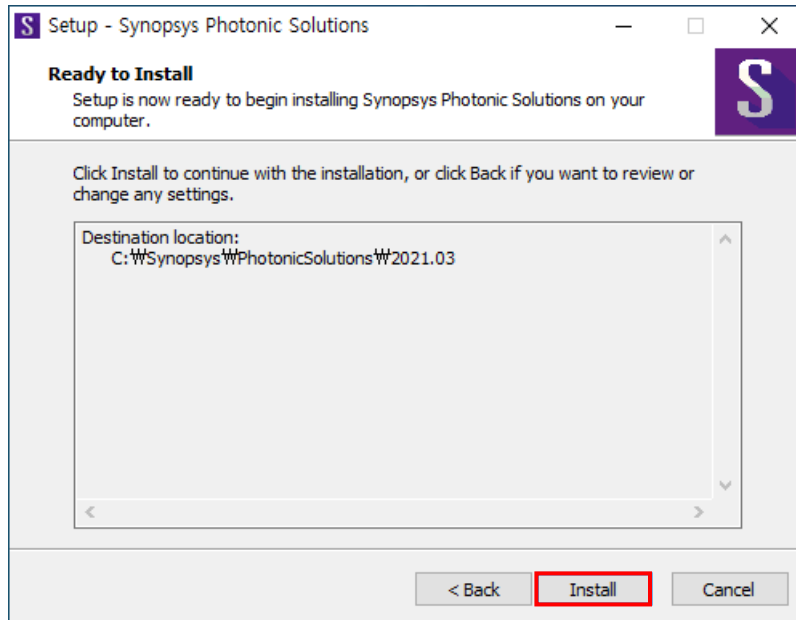
## 6. SCL Installer Setup



- SCL 설치파일 가져오기 (자동 입력)
- Next 클릭
- 기존에 RSoft를 설치한 적이 있다면(SCL이 설치되어 있다면) 빈 칸 그대로 Next 클릭

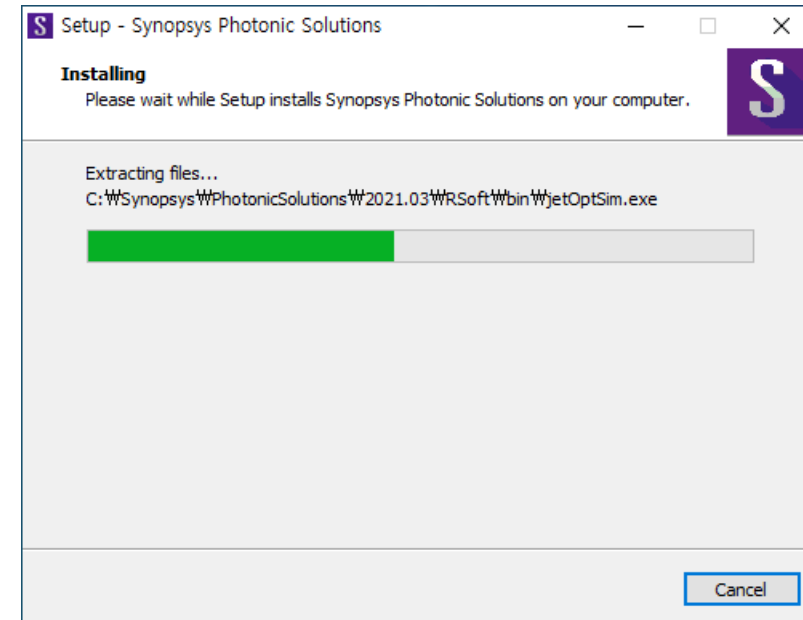
# Network (Server Installation) License Setup

## 7. Ready to Install



- Install 클릭

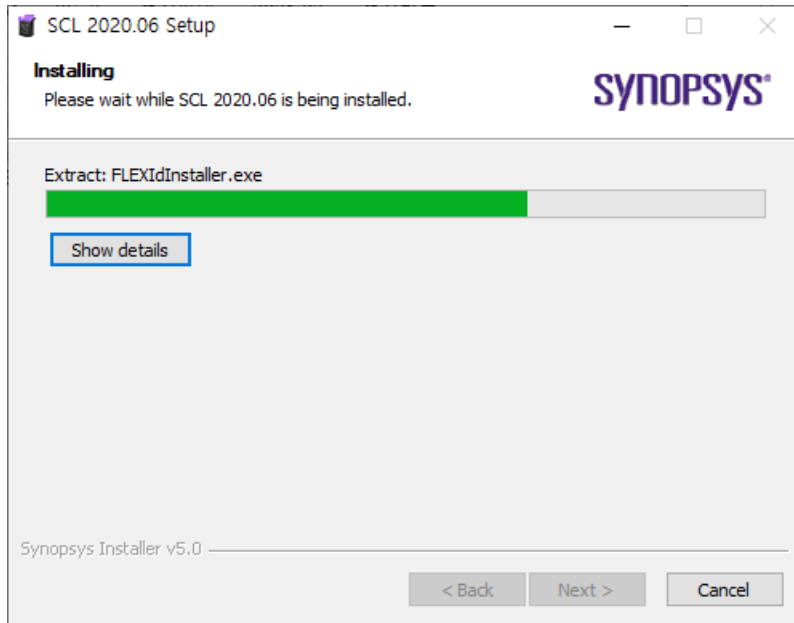
## 8. RSoft Installing



- RSoft 설치 중

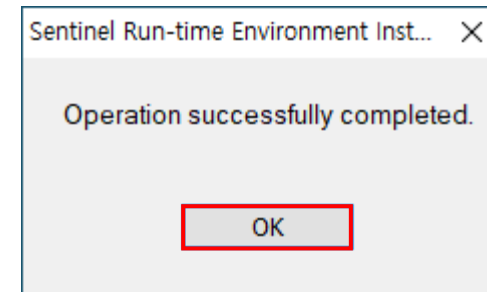
# Network (Server Installation) License Setup

## 9. SCL Installing



- SCL 설치 중

## 10. Dongle Install

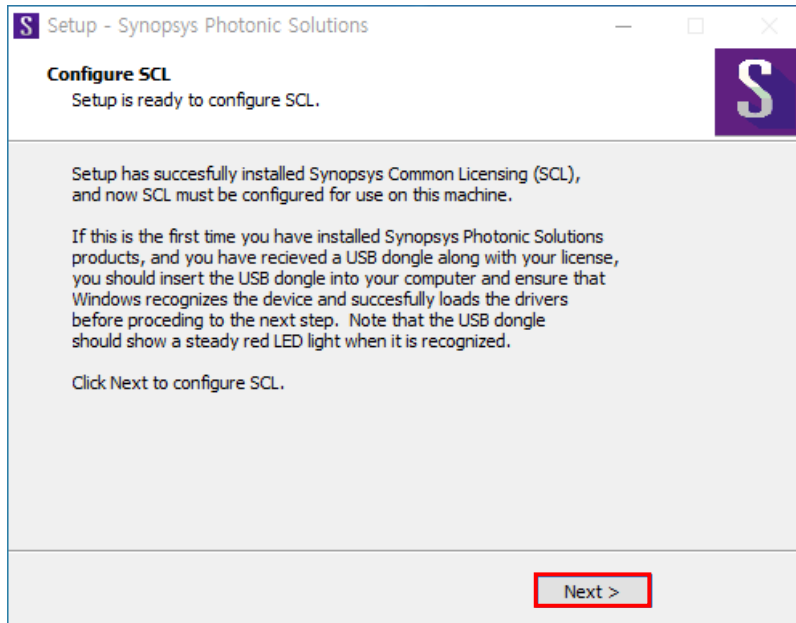


- USB Dongle 드라이버 설치 완료
- OK 클릭



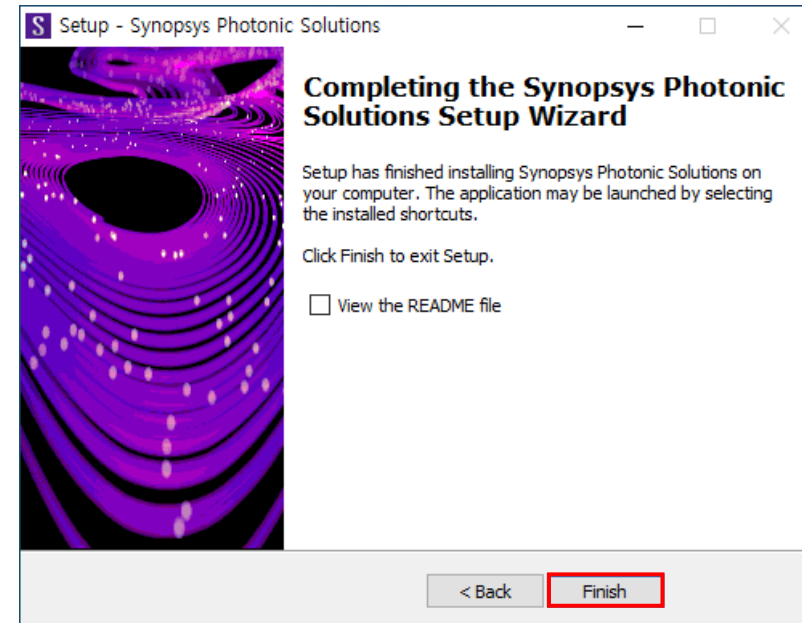
# Network (Server Installation) License Setup

## 11. Configure SCL



- SCL 구성
- Dongle에 빨간 불이 들어와 있는지 확인
- Next 클릭

## 12. 설치 완료



- Finish 클릭

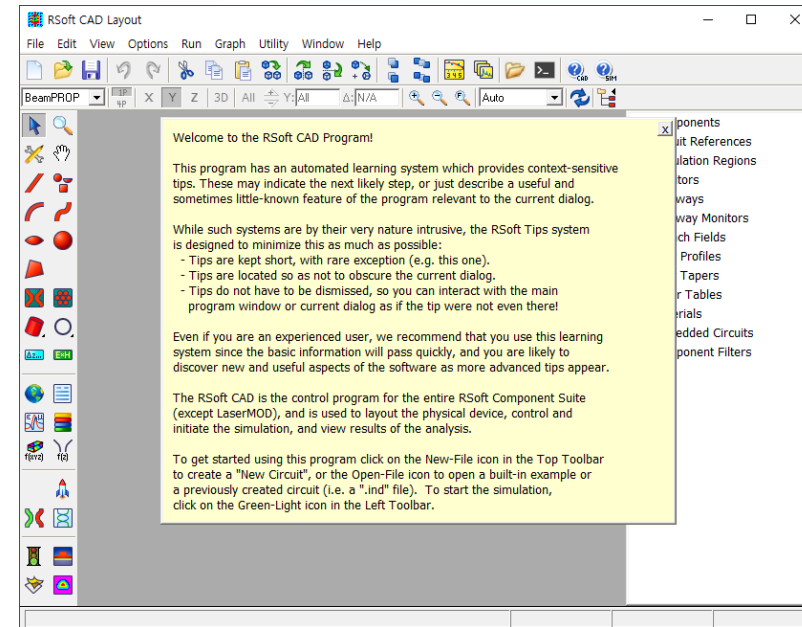
# Network (Server Installation) License Setup

## 13. RSoft Device 실행



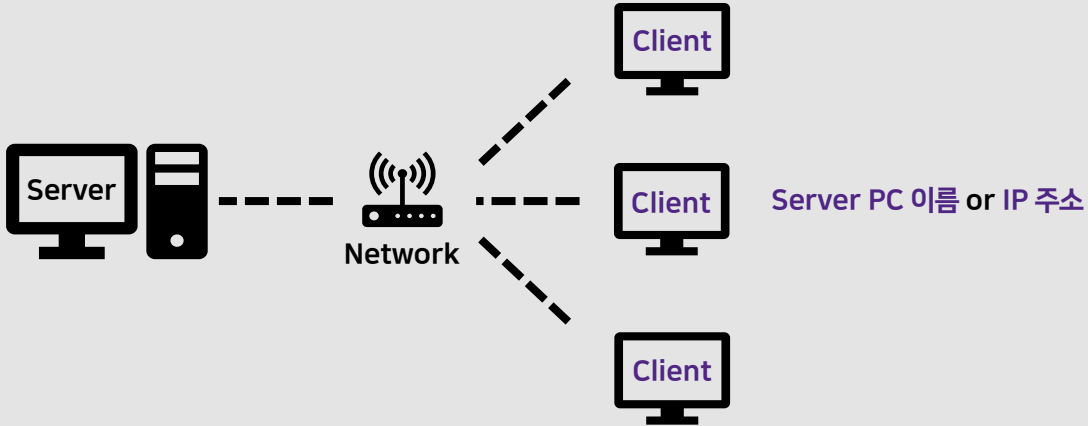
- RSoft CAD-Layout 2021.09 클릭
- 2021.03 버전부터 RSoft Device/System, OptoDesigner가 통합되어 설치

## 14. 실행 완료



- 실행 완료

# Network (Client Installation) License Setup



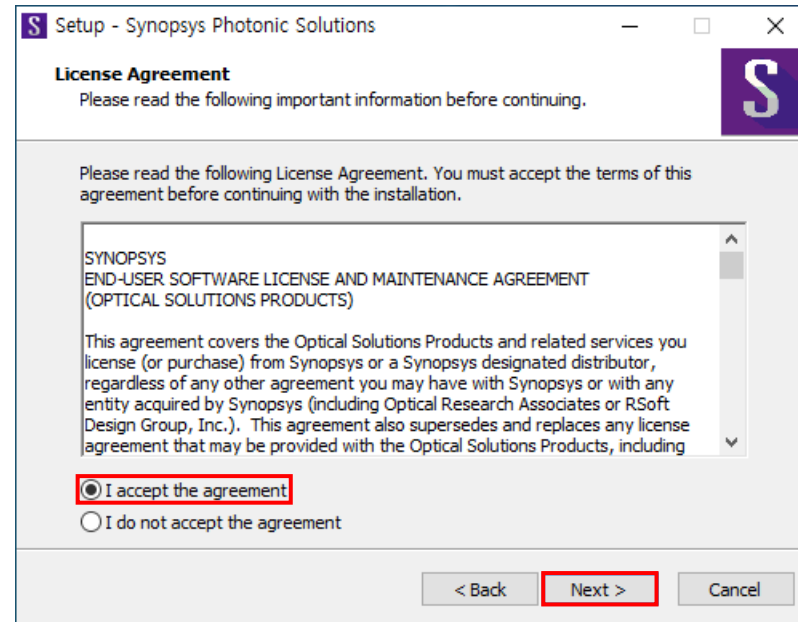
# Network (Client Installation) License Setup

## 1. 설치 파일 실행



- RSoft 설치파일 실행
- Next 클릭

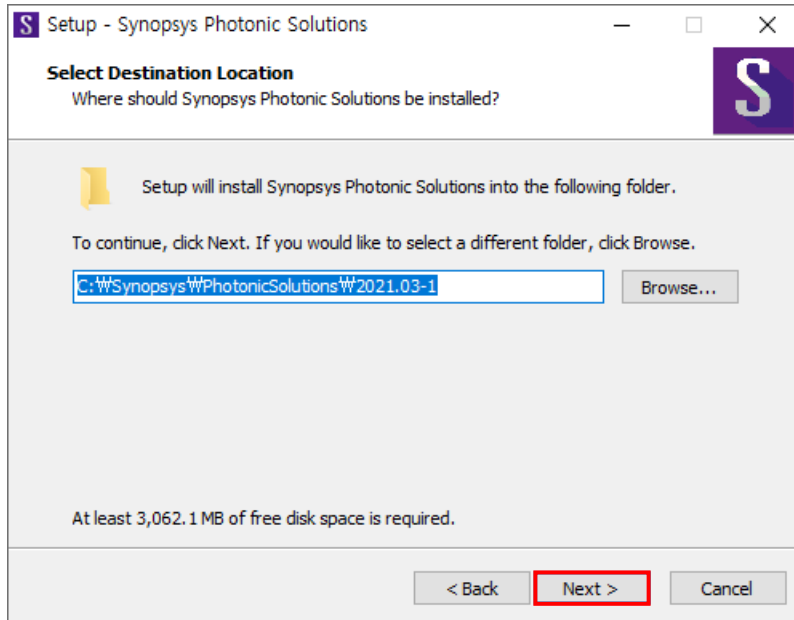
## 2. License Agreement



- I accept the agreement 선택
- Next 클릭

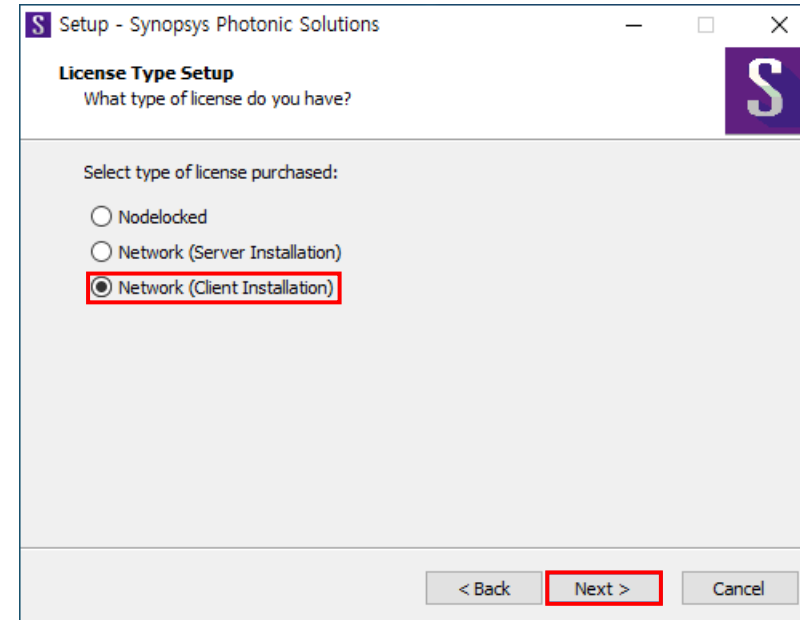
# Network (Client Installation) License Setup

## 3. License Type Setup



- 설치 위치 지정 (자동 입력)
- Next 클릭

## 4. Select Destination Location



- Network (Client Installation) 선택
- Next 클릭

# Network (Client Installation) License Setup

## 5. Network Client Setup

Setup - Synopsys Photonic Solutions

**Network Client Setup**  
Which machine is acting as the Network License Server?

Synopsys License Server (SNPSLMD\_LICENSE\_FILE)  
[port@]server[:port@server;...]

RSoft License Server (RSLM\_SERVER)  
(only required for versions prior to 2020.03)

< Back **Next >** Cancel

- 27020@Server PC의 이름 또는 IP 주소 입력  
ex) 27020@123.123.123.123
- Next 클릭

## 6. Ready to Install

Setup - Synopsys Photonic Solutions

**Ready to Install**  
Setup is now ready to begin installing Synopsys Photonic Solutions on your computer.

Click Install to continue with the installation, or click Back if you want to review or change any settings.

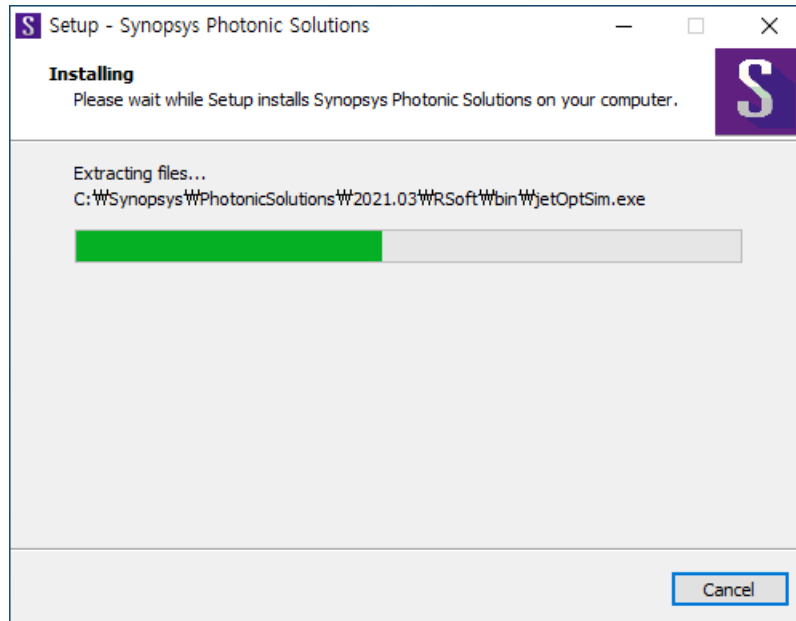
Destination location:  
C:\Synopsys\PhotonicSolutions\2021.03

< Back **Install** Cancel

- Install 클릭

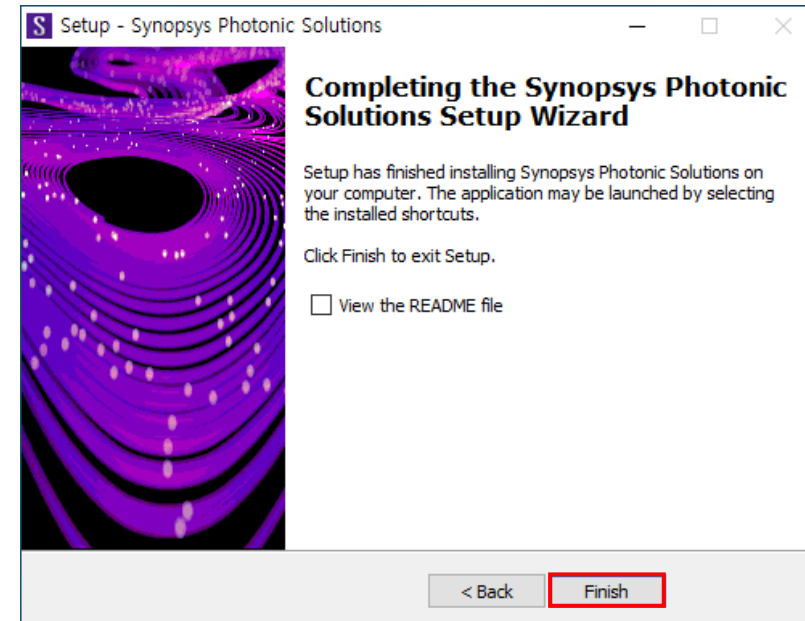
# Network (Client Installation) License Setup

## 7. RSoft Installing



- RSoft 설치 중

## 8. 설치 완료



- Finish 클릭

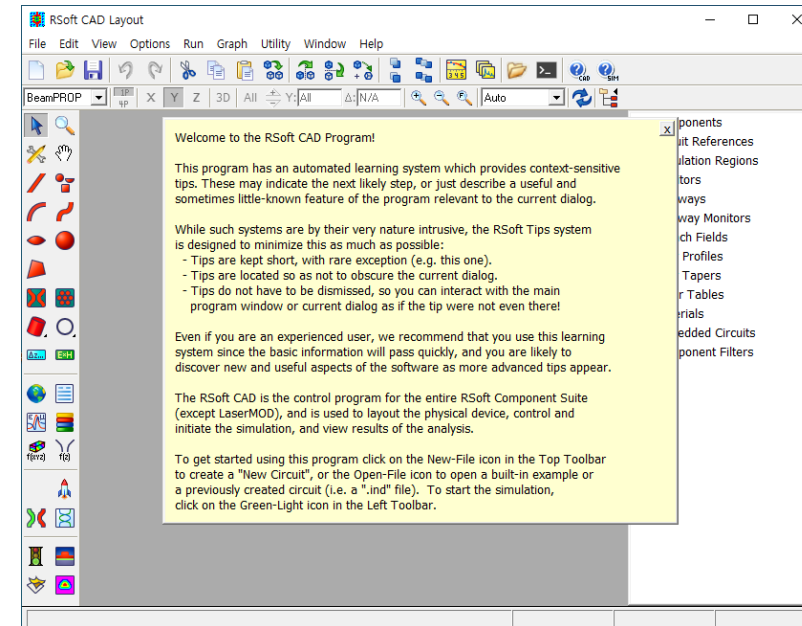
# Network (Client Installation) License Setup

## 9. RSoft Device 실행



- RSoft CAD-Layout 2021.09 클릭
- 2021.03 버전부터 RSoft Device/System, OptoDesigner가 통합되어 설치

## 10. 실행 완료



- 실행 완료

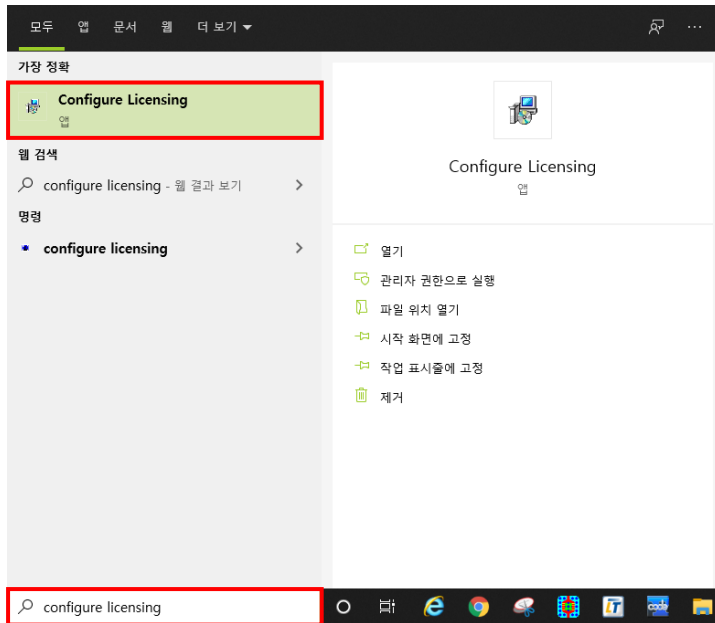


# Configure Licensing



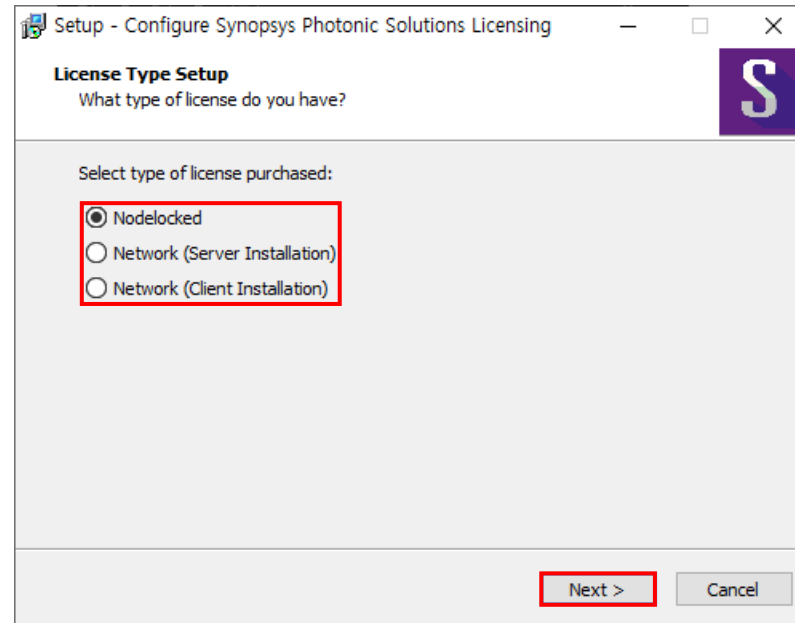
# Configure Licensing

## 1. Configure Licensing 실행



- 시작 > Configure Licensing 검색
- Configure Licensing 실행

## 2. License Agreement



- 라이선스 유형 선택
- Next 클릭

# Configure Licensing (라이선스 재적용)

## 3. License Key File Setup

Setup - Configure Synopsys Photonic Solutions Licensing

### License Key File Setup

Where is the License Key File obtained from Synopsys located?

A valid License Key File is necessary for operation.

If you do not have this file, please obtain it as described in the installation guide.

If you have Synopsys tools outside the Photonic Solutions Group product line installed on this machine, this automated installation may conflict with them. Contact photonics\_support@synopsys.com for further information.

Location of the License Key File (if unchanged you may leave blank):

< Back **Next >** Cancel

- 라이선스 파일 가져오기
- Next 클릭

## 4. SCL Installer Setup

Setup - Configure Synopsys Photonic Solutions Licensing

### SCL Installer Setup

Where is the SCL Installer located?

Synopsys Common Licensing (SCL) Version 2020.06 is installed on this machine.

If you are intending to upgrade, please indicate the location of the installer below.

Location of the SCL Installer (if unchanged you may leave blank):

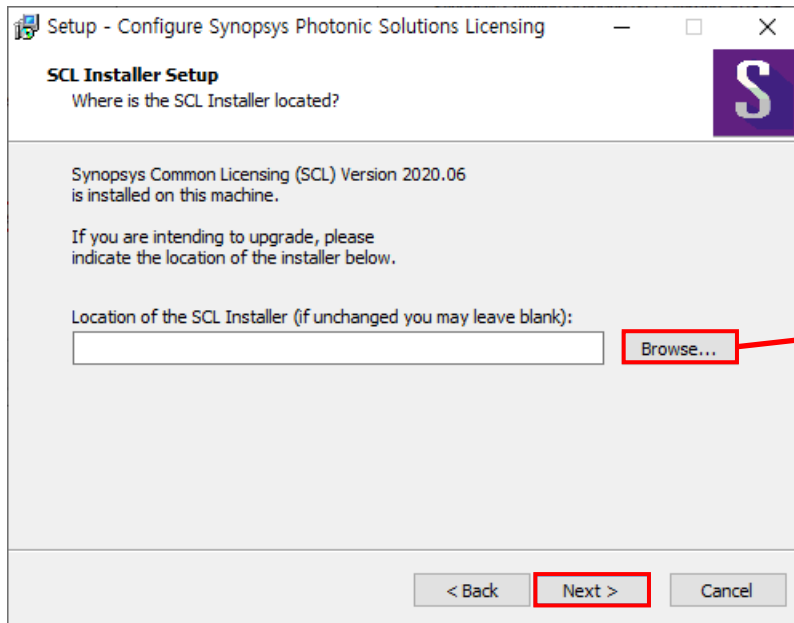
  

< Back **Next >** Cancel

- 빈 칸 그대로 두기
- Next 클릭

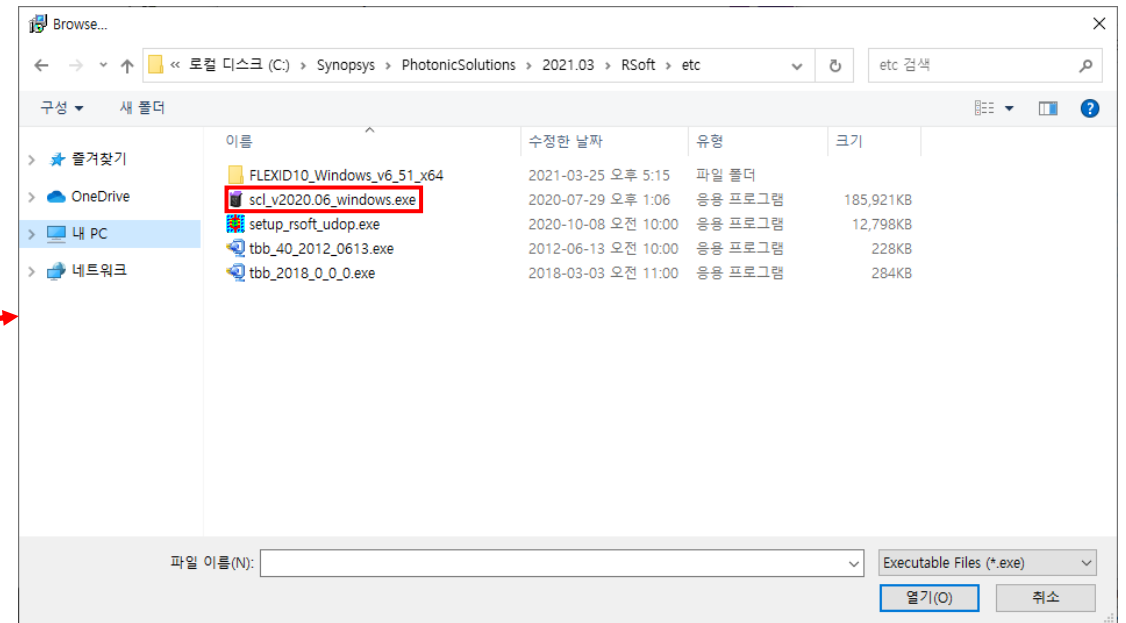
# Configure Licensing (SCL 재설치)

## 4. SCL Installer Setup



- SCL Installer 파일 열기
- Next 클릭

## SCL Installer



- C:\Synopsys\PhotonicSolutions\2021.09\RSoft\etc 경로에서 'scl\_v2020.06\_windows.exe' 파일 열기

# Thank You

